

SubliNova Smart

DTI Tech. Data_E_150102

SubliNova Smart Technical Data

GENERAL INFORMATION

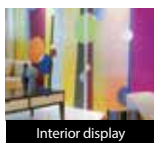
InkTec has been providing high quality dye sublimation inks for many years based on our own dispersed technology. InkTec's dye sublimation inks provide high intensity colours because the particles are spread evenly. To produce InkTec dye sublimation inks, we evaluate the key factors of ink - durability, colour and light fastness - by using hi-tech methods.

ABOUT THE SUBLINOVA

'SubliNova' is the brand name of InkTec's dye sublimation ink. This name is derived from the words 'Sublimation and 'Innovation'. Nova means 'new star', which reflects our desire to become a new star-player in the worldwide sublimation market. SubliNova is easily recognizable as a sublimation ink whilst also highlighting the innovation that went into producing it.

APPLICATIONS

- Polyester and polyamide fabrics, spandex, lycra, nylon used in sports apparel and outdoor clothing
- Plastic substrates like skis, snowboards, skateboards and surfboards
- Mixed synthetic fabrics(used in sports apparel and outdoor clothing) with a minimum polyester content of 60%



TRANSFER CONDITION

SubliNova transfer time can vary from 30 ~ 60 sec.
at 180°C ~ 210°C depending on the type of substrate.



InkTec Europe Unit 1&2, Glenmore Business Centre, Range Road,
OXON, OX29 0AA, United Kingdom **Tel** +44 1993 862770 **Fax** +44 1993 862771
Web www.inktec-europe.com

All brand names & trademarks are property of their respective owners.



Go Green
with InkTec



SUBLINOVA SMART

SubliNova Smart can be used with both direct printing on fabrics and traditional heat transfer process with transfer paper. It has superior printing quality in various printing environments as well as jetting stability in long term printing with various printers on the market.

PRIMARY FEATURES

- Suitable for the plotters equipped with Epson DX4, DX5 printhead
- Fast drying time on transfer paper
- Enhanced productivity
- Universal for both direct and transfer printing
- Intense and vibrant colours
- Superior fastness properties
- Environmentally friendly: Free from formaldehyde, VOC's and compliance with RoHS

TABLE OF FASTNESS PROPERTIES

Excellent fastness properties are just a few of SubliNova Smart's competitive advantages.

Content Colour	Transfer Condition		Light Fastness	Wash Fastness	Alkali Perspiration Fastness	Crock Fastness
			ISO 105-B02:1994(160h) Rating 1~7	ISO 105-C06:2007(40°C) Rating 1~5	ISO 105-E04:2010 Rating 1~5	ISO 105-X 12:2001 Rating 1~5
● Black	180°C/ 60sec	200°C/ 30sec	5	4/5	4/5	4/5
● Cyan	180°C/ 60sec	200°C/ 30sec	4/5	4/5	4/5	4/5
● Magenta	180°C/ 60sec	200°C/ 30sec	7	4/5	4/5	4/5
● Yellow	180°C/ 60sec	200°C/ 30sec	7	4/5	4/5	4/5

ECO FRIENDLY

SubliNova Smart is an environmentally friendly product using only high-class dyes and its excellent quality has been proved by an international testing agency.



Test results for RoHS

All test results are 'Not detected', as authorised by SGS(<http://www.sgsgroup.kr/en>).

Content Colour	Cadmium(Cd)	Lead(Pb)	Mercury(Hg)	Hexavalent Chromium(Cr VI)
● Black	N.D.	N.D.	N.D.	N.D.
● Cyan	N.D.	N.D.	N.D.	N.D.
● Magenta	N.D.	N.D.	N.D.	N.D.
● Yellow	N.D.	N.D.	N.D.	N.D.



Test results for formaldehyde & VOCs(Volatile Organic Compounds)

Formaldehyde and VOCs can cause serious health problems.

All test results are 'Not detected', as authorised by SGS(<http://www.sgsgroup.kr/en>).

Content Colour	Formaldehyde	VOCs
● Black	N.D.	N.D.
● Cyan	N.D.	N.D.
● Magenta	N.D.	N.D.
● Yellow	N.D.	N.D.

PRODUCT OFFERING

Colour	440ml Cartridge	1L Pack	1L Bottle	20L Bottle
● Black	DTI-0011B	DTI-1001B	DTI01-01LB	DTI01-20LB
● Cyan	DTI-0012C	DTI-1002C	DTI02-01LC	DTI02-20LC
● Magenta	DTI-0013M	DTI-1003M	DTI03-01LM	DTI03-20LM
● Yellow	DTI-0014Y	DTI-1004Y	DTI04-01LY	DTI04-20LY
● Light Cyan	DTI-0015LC	DTI-1005LC	DTI05-01LLC	DTI05-20LLC
● Light Magenta	DTI-0016LM	DTI-1006LM	DTI06-01LLM	DTI06-20LLM
● Orange	DTI-0017O	DTI-1007O	DTI07-01LO	DTI07-20LO
● Red	DTI-0018R	DTI-1008R	DTI08-01LR	DTI08-20LR
● Blue	DTI-0019BL	DTI-1009BL	DTI09-01LBL	DTI09-20LBL
● Light Black			DTI10-01LLB	
● Photo Black	DTI-0020PK		DTI20-01LPK	DTI20-20LPK
● Light Light Black			DTI21-01LLL	
● Flourescent Yellow			DTI22-01LFY	
● Flourescent Pink			DTI23-01LFP	
● Cleaning Solution	SWA-C220M(220ml)		SWA-B01L	SWA-B20L

Note: The information contained in this technical data sheet are based on our present experience and knowledge.
In consideration of the various factors which can effect the results achieved in the final application, InkTec doesn't take any responsibility for an improper use of the product by the user which can violate or damage rights of third parties.



InkTec Europe Unit 1&2, Glenmore Business Centre, Range Road,
OXON, OX29 0AA, United Kingdom **Tel** +44 1993 862770 **Fax** +44 1993 862771
Web www.inktec-europe.com

All brand names & trademarks are property of their respective owners.



Go Green
with InkTec

